

 **WORKHAND®**



AIRFLOW



SMARTFIBER

MAGICKNIT

TOUCHSCREEN

DRY-FIT® **AIRFLOW**

**SUSTAINABLE GLOVES MADE FROM
RECYCLED PLASTIC BOTTLES**



**OUR OCEANS AND
COASTLINES ARE CHOKING
ON PLASTIC. IT'S TIME
TO MAKE A CHANGE.**



DRY-FIT® GLOVES ARE KNITTED WITH YARN MADE FROM RECYCLED PLASTIC BOTTLES.

1 PLASTIC BOTTLE = 1 PAIR OF GLOVES

For every pair of gloves produced, one plastic bottle is saved from the ocean or a landfill. The bottles used for our gloves are collected from local beaches and recycling stations near our factory in Sri Lanka.



Sustainable
materials



Certified
packaging



**STANDARD
100**

20.HNO.34270
Hohenstein HTTI

Tested for harmful
substances



Touchscreen
fingertips



MARTINDALE

Abrasion tested
to last longer

THE DRY-FIT® RANGE

Forget everything you know about precision gloves. The Dry-Fit® range is, in addition to being sustainable, the most flexible and comfortable gloves you have ever experienced!



DRY-FIT®
AIRFLOW
100209



DRY-FIT®
AIRFLOW/GRIP
100203



DRY-FIT®
AIRFLOW/LIGHT
100212



DRY-FIT®
AIRFLOW/LIGHT GRIP
100213



DRY-FIT®
AIRFLOW/BIO
100219



DRY-FIT®
AIRFLOW/CUT B
100216



DRY-FIT®
AIRFLOW/CUT C
100217



DRY-FIT®
AIRFLOW/CUT C GRIP
100218



DRY-FIT®
AIRFLOW/IMPACT
200220



DRY-FIT®
AIRFLOW/COLD
300209



DRY-FIT®
AIRFLOW/COLD WOOL
300252



DRY-FIT®
AIRFLOW/COLD WOOL WP
300210

SUSTAINABLE GLOVE TECHNOLOGY

OEKO-TEX®

Tested for harmful substances.

The whole glove is certified and free from toxic substances.

SMARTFIBER™

Extra soft and sustainable.

Super soft and flexible yarn made from recycled plastic bottles (rPET).

MAGICKNIT™

Like a second skin.

4-way stretch and formfit design, shaped to the hand and fingers.

PROLONG™

Less throwaway!

Tested against wear and tear. Built to last

AIRFLOW™

Keeps the hand cool and dry.

Highly breathable foam coating allows you to keep the glove on all day.

TOUCHSCREEN

Works on all screens.

Use on any screen without taking the gloves off.



WORKHAND® DRY-FIT®

AIRFLOW



Our unique AirFlow™, in combination with revolutionary MagicKnit™ technology, provides full air circulation and perfect fit. Sustainable SmartFiber™ made from recycled plastic bottles means superior softness and flexibility, allowing you to keep the gloves on – all day.

- 360° air circulation
- 4-way stretch and formfit design
- Touchscreen compatible
- Durability min. 20.000 Martindale



Yarn from recycled plastic bottles



Certified packaging



STANDARD 100
20.HND.34270
Hohenstein HTTI

SIZE	ART. NO.
6	100209-06
7	100209-07
8	100209-08
9	100209-09
10	100209-10
11	100209-11
12	100209-12

Type: Precision dry environment
 Length: +/- 25 cm (stretch to fit)
 Palm thickness: +/- 1 mm
 Lining: Fine mesh of sustainable yarn
 Single sales unit: 1 pair / Header card
 Content per Package / Carton: 12/144

EN ISO 21420



CAT.II



X1XXXX

EN388



4X31A

WORKHAND® DRY-FIT®

AIRFLOW/GRIP



AirFlow™ ensures full air circulation, and the sustainable SmartFiber™ made from recycled plastic bottles provides superior softness and flexibility. The glove is made to last and reduce waste. With durable nitrile dots for extra grip.

- Nitrile dots for extra grip
- 360° air circulation
- 4-way stretch and formfit design
- Touchscreen compatible
- Durability min. 20.000 Martindale



Yarn from recycled plastic bottles



Certified packaging



AIRFLOW



STANDARD 100
20.HNO.34270
Hohenstein HTTI

SIZE

7
8
9
10
11

ART. NO.

100203-07
100203-08
100203-09
100203-10
100203-11

Type: Precision dry environment
Grip: Nitrile dots
Length: +/- 25 cm (stretch to fit)
Palm thickness: +/- 1 mm
Lining: Fine mesh of sustainable yarn
Single sales unit: 1 pair / Header card
Content per Package / Carton: 12/144

EN ISO 21420



CAT.II



X1XXXX

EN388



4X31A

WORKHAND® DRY-FIT®

AIRFLOW LIGHT



This ultra-lightweight precision glove feels like an invisible layer of skin. Sustainable SmartFiber™ made from recycled plastic bottles provide superior flexibility, and the revolutionary MagicKnit™ knitting ensures perfect fit. Wear-tested to last longer.

- Ultralight for precision handling
- 360° air circulation
- 4-way stretch and formfit design
- Touchscreen compatible



Yarn from recycled plastic bottles



Certified packaging



AIRFLOW



TOUCHSCREEN



STANDARD 100
20.HMD.34270
Hohenstein HTTI

SIZE

7
8
9
10
11

ART. NO.

100212-07
100212-08
100212-09
100212-10
100212-11

Type: Precision dry environment
Length: +/- 25 cm (stretch to fit)
Palm thickness: +/- 0,75 mm
Lining: Fine mesh of sustainable yarn
Single sales unit: 1 pair / Header card
Content per Package / Carton: 12/144

EN ISO 21420



CAT.II

EN407



X1XXXX

EN388



4X21A

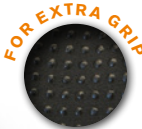
WORKHAND® DRY-FIT®

AIRFLOW LIGHT/GRIP



This ultralight precision glove comes with durable nitrile dots for extra grip. Sustainable SmartFiber™-yarn combined with our AirFlow™ coating provides superior softness, flexibility and full air circulation.

- Ultralight with dots for extra grip
- 360° air circulation
- 4-way stretch and formfit design
- Touchscreen compatible



Yarn from recycled plastic bottles



Certified packaging



AIRFLOW



TOUCHSCREEN



STANDARD 100
20.HNO.34270
Hohenstein HTTI

SIZE

7
8
9
10
11

ART. NO.

100213-07
100213-08
100213-09
100213-10
100213-11

Type: Precision dry environment
Length: +/- 25 cm (stretch to fit)
Grip: Nitrile dots
Palm thickness: +/- 0,75 mm
Lining: Fine mesh of sustainable yarn
Single sales unit: 1 pair / Header card
Content per Package / Carton: 12/144

EN ISO 21420



CAT.II



X1XXXX

EN388



4X21A

WORKHAND® DRY-FIT®

AIRFLOW/BIO



A eco-friendly glove with extreme features. SmartFiber™ from recycled plastic bottles (rPET) make the gloves extra soft and flexible. The rPET yarn is naturally antibacterial and provides 98% UV-protection. The foam coating is biodegradable. With a combination of cotton, rPET yarn and biodegradable foam gives you a sustainable glove with superior comfort.

- Biodegradable foam nitrile
- Extremely comfortable on the hand
- 360° air circulation
- 4-way stretch and formfit design
- Touchscreen compatible



Yarn from recycled plastic bottles



Certified packaging



AIRFLOW



TOUCHSCREEN



STANDARD 100
20.HNO.34270
Hohenstein HTTI

SIZE

7
8
9
10
11

ART. NO.

100219-07
100219-08
100219-09
100219-10
100219-11

Type: Precision dry environment
Length: +/- 25 cm (stretch to fit)
Palm thickness: +/- 1 mm
Lining: Fine mesh of eco friendly yarn
Single sales unit: 1 pair / Header card
Content per Package / Carton: 12/144

EN ISO 21420



CAT.II

EN407



X1XXXX

EN388



4X21A

WORKHAND® DRY-FIT®

AIRFLOW/CUT-B



Ultralight, non-itchy and cut resistant. Usually liners supported with glass fiber is used for cut protection, but this can cause itching and skin irritation. We have replaced it with a soft interior made with our SmartFiber™ which truly takes care of your most important work tool, your hands!

- Ultralight cut protection level B
- Extended wrist protection
- Moisture absorption and cooling fiber
- 360° air circulation
- 4-way stretch and formfit design
- Touchscreen compatible



Yarn from recycled plastic bottles



Certified packaging



AIRFLOW



TOUCHSCREEN



STANDARD 100
20.HNO.34270
Hohenstein HTTI

SIZE

7
8
9
10
11

ART. NO.

100216-07
100216-08
100216-09
100216-10
100216-11

Type: Cut protection dry environment
Length: +/- 27 cm (stretch to fit)
Palm thickness: +/- 0,80 mm
Lining: Fine mesh of sustainable yarn
Single sales unit: 1 pair / Header card
Content per Package / Carton: 12/72

EN ISO 21420



CAT.II

EN388



4X31B

WORKHAND® DRY-FIT®

AIRFLOW/CUT-C



Enhanced cut protection without compromising the comfort. The sustainable SmartFiber™ from recycled bottles gives you a glove with soft and non-itchy interior that cares for your hands. The glove feels moulded on and makes precision work easier.

- Lightweight cut protection level C
- Extended wrist protection
- Moisture absorption and cooling fiber
- 360° air circulation
- 4-way stretch and formfit design
- Touchscreen compatible



Yarn from recycled plastic bottles



Certified packaging



STANDARD 100
20.HNO.34270
Hohenstein HTTI

SIZE

7
8
9
10
11

ART. NO.

100217-07
100217-08
100217-09
100217-10
100217-11

Type: Cut protection dry environment
Length: +/- 28 cm (stretch to fit)
Palm thickness: +/- 1 mm
Single sales unit: 1 pair / Header card
Lining: Fine mesh of sustainable yarn
Content per Package / Carton: 12/72

EN ISO 21420



CAT.II

EN388



4X42C

WORKHAND® DRY-FIT®

AIRFLOW/CUT-C GRIP



Gloves with enhanced cut protection without compromising the comfort and dexterity. Durable nitrile dots protect the palm from scrubbing, while sustainable SmartFiber™ provides long time wear with a non-itchy, soft interior.

- Lightweight cut protection level C
- Nitrile dots for extra grip
- Extended wrist protection
- Moisture absorption and cooling fiber
- 360° air circulation
- 4-way stretch and formfit design
- Touchscreen compatible



Yarn from recycled plastic bottles



Certified packaging



AIRFLOW



TOUCHSCREEN



STANDARD 100
20.MNO.34270
Hohenstein HTTI

SIZE

7
8
9
10
11

ART. NO.

100218-07
100218-08
100218-09
100218-10
100218-11

Type: Cut protection dry environment
Grip: Nitrile dots
Length: +/- 28 cm (stretch to fit)
Palm thickness: +/- 1 mm
Single sales unit: 1 pair / Header card
Lining: Fine mesh of sustainable yarn
Content per Package / Carton: 12/72

EN ISO 21420



CAT.II

EN407



X1XXXX

EN388



4X42C

THE PLASTIC PROBLEM

1 MILLION
PLASTIC BOTTLES
SOLD EVERY MINUTE

80%
OF BOTTLES ARE
NOT RECYCLED
AND END UP AS WASTE

IT TAKES UP TO
500 YEARS
FOR PLASTIC BOTTLES
TO DEGRADE

THE DRY-FIT® SOLUTION



1 PAIR DRY-FIT
REUSES 1
PLASTIC BOTTLE

54% LESS
CO2-EMISSIONS

70% LESS
ENERGY CONSUMPTION

*COMPARED TO
VIRGIN PLASTIC

WATERPROOF/IMPACT



High performance impact glove with 360° Cut-E protection and waterproof membrane to protect against wet and windy weather conditions. All the layers are integrated in a seamless technology with a cotton interior, Ansi level 2 impact, secure Velcro closure and touch screen fingertips. This means that you can keep the glove on and stay comfortable all day.

- Ansi level 2 impact protection
- 360° cut protection, level E
- Waterproof membrane
- Soft cotton lining
- 4-way stretch and formfit design
- Touchscreen compatible



Yarn from recycled plastic bottles



Certified packaging



SIZE	ART. NO.
7	200220-07
8	200220-08
9	200220-09
10	200220-10
11	200220-11

Type: Impact-/cut protection
Length: +/- 25 cm (stretch to fit)
Palm thickness: Not applicable
Lining: Cotton
Single sales unit: 1 pair / Header card
Content per Package / Carton: 6/72

EN ISO 21420



CAT. II



X1 XXXX

EN388



4X42EP

EN 511



X11

WORKHAND® DRY-FIT®

AIRFLOW/COLD



Many have asked us to make a Dry-Fit glove with a winter lining. Finally, we made it! Super-soft, breathable and with a warm Smart Fiber™ lining firmly fastened to the tips. The glove feels moulded on and combines flexibility with precision – even on cold days.

- Warm and soft polar fleece
- 360° air circulation
- 4-way stretch and formfit design
- Touchscreen compatible



Yarn from recycled plastic bottles



Certified packaging



STANDARD 100
20.HNO.34270
Hohenstein HTTI

SIZE

7
8
9
10
11

ART. NO.

300209-07
300209-08
300209-09
300209-10
300209-11

Type: Precision cold environment
Length: +/- 25 cm (stretch to fit)
Palm thickness: Not applicable
Lining: Polar fleece
Single sales unit: 1 pair / Header card
Content per Package / Carton: 6/72

EN ISO 21420



CAT.II

EN 511



12X

EN388



4X42A

WORKHAND® DRY-FIT®

AIRFLOW/COLD WOOL



Workhand Dry-Fit Airflow Cold/Wool has a mix of Merino wool and silk on the inside to keep you warm and comfortable in cold weather. These natural fibers are environmental friendly. The glove has a unique honeycomb patterned palm that gives you enhanced grip, ventilation and protection.

- Merino wool and silk lining
- Honeycomb pattern for extra grip
- 360° air circulation
- 4-way stretch and formfit design
- Touchscreen compatible



Yarn from recycled plastic bottles



Certified packaging



AIRFLOW



TOUCHSCREEN



STANDARD 100
20.HNO.34270
Hohenstein HTTI

SIZE

7
8
9
10
11

ART. NO.

300252-07
300252-08
300252-09
300252-10
300252-11

Type: Precision cold environment
Grip: Honeycomb pattern
Length: +/- 25 cm (stretch to fit)
Palm thickness: +/- 1 mm
Lining: Wool and silk
Content per Package / Carton: 6/72

EN ISO 21420



CAT. II

EN 511



X1X

EN388



4X31A

WATERPROOF/COLD WOOL WP



The next level winter glove that everyone has been waiting for! The entire glove has waterproof technology to protect against bad weather conditions and blocks wind, rain, and snow. All the layers in the glove are fixed together and delivers a unique comfort, fit and hand motion. No seams to be broken, and no need to take your gloves off when using touch screen devices. The whole exterior liner is made of 100 % recycled yarn!

- Waterproof membrane
- Excellent insulation and comfort
- 4-way stretch and formfit design
- Touchscreen compatible



Yarn from recycled plastic bottles



Certified packaging



SIZE	ART. NO.
7	300210-07
8	300210-08
9	300210-09
10	300210-10
11	300210-11

Type: Precision cold environment
Length: +/- 25 cm (stretch to fit)
Palm thickness: Not applicable
Lining: Brushed acrylic
Single sales unit: 1 pair / Header card
Content per Package / Carton: 6/72

EN ISO 21420



CAT. II



111

EN388



4X42B



This brochure is labelled with the Nordic Swan, and printed on FSC®-certified paper to ensure sustainable production and responsible forestry.

